



# Micronucleus Assay-based Evaluation of Radiosensitivity of Lymphocytes among Inhabitants Living in High Background Radiation Area of Mamuju, West Sulawesi, Indonesia

Mukh Syaifudin, Vira Putri Defiyandra<sup>1</sup>, Siti Nurhayati, Sofiati Purnami, Eko Pudjadi<sup>2</sup>

Nuclear Medicine Technique and Radiation Biology Division, Center for Technology of Radiation Safety and Metrology, National Nuclear Energy Agency (BATAN), Cilandak, <sup>1</sup>Department of Biotechnology, Faculty of Sciences, Al-Azhar Indonesia University, Kebayoran Baru, <sup>2</sup>Radioecology Division, Center for Technology of Radiation Safety and Metrology (PTKMR), National Nuclear Energy Agency (BATAN), Cilandak, Jakarta, Indonesia

## ABSTRACT

Naturally occurring radiation can be found all around us and account for most of the radiation received by human beings each year. Indonesia has a region with high-dose natural radiation located in the suburb of West Sulawesi province with a dose rate up to 2800 nSv/h; however, its impact was not fully understood. The aim of this study was to evaluate the radiosensitivity of 12 peripheral blood lymphocytes of inhabitant from high background radiation area (HBRA) and 10 from normal background radiation area (NBRA) based on cytokinesis-block micronucleus (CBMN) assay after challenged with 1.5 Gy of gamma ray. The analysis of CBMN was done according to standard procedure as per IAEA guidelines, and frequency of binucleate (mitotic) cells with micronuclei (MN) was scored in around 2000 binucleate lymphocytes cells per culture in microscopic analysis. Mean MN frequency for HBRA was lower than that of NBRA (0.121 vs. 0.189) after irradiation, indicating an adaptive response in HBRA group that resulted in less radiosensitivity; however, there was no statistically significant difference ( $P > 0.05$ ) between these two groups. The MN number was higher in women compared to men for both HBRA (0.15 vs. 0.09) and NBRA (0.216 vs. 0.147) groups. Besides, there was no statistically significant difference ( $P > 0.05$ ) in Nuclear Division Index (NDI), as measured in 500 metaphase cells with published formula, between HBRA and NBRA samples (1.24 vs. 1.21). The lower MN frequency prompts us to conclude that there is an adaptive response in the lymphocytes of inhabitants as an indicator of lower radiosensitivity to the high natural radiation exposure. Further studies using large number of samples are required to obtain more comprehensive conclusion along with the assessment of other types of radiosensitivity-related biomarkers.

**Key words:** Adaptive response, high background radiation area, Mamuju, Micronuclei, normal background radiation area, Nuclear Division Index

## Introduction

People are constantly exposed to low levels of ionizing radiation naturally present in the environment. This is the major source of human exposure to ionizing radiation which harms the body as it can ionize cell components throughout its path in the cell. The elevated levels of natural radiation such as from radon and the products of its disintegration were found to cause significant

cytogenetic alterations.<sup>[1]</sup> Studies on the health of populations living in high background radiation area (HBRA) are a potential source of information on the effects of chronic low-dose-rate exposures.

Effective biomonitoring for the detection of radiation-induced genotoxicity of radioactive contamination in natural environment involves testing of blood lymphocyte of local residence for cytogenetic changes.<sup>[2]</sup> Blood, which can be easily accessed, represents a convenient compartment to assess radiation bioindicators. A variety of mutagenicity test procedures has been developed which enables the detection of DNA

This is an open access journal, and articles are distributed under the terms of the Creative Commons Attribution-NonCommercial-ShareAlike 4.0 License, which allows others to remix, tweak, and build upon the work non-commercially, as long as appropriate credit is given and the new creations are licensed under the identical terms.

**For reprints contact:** reprints@medknow.com

**How to cite this article:** Syaifudin M, Defiyandra VP, Nurhayati S, Purnami S, Pudjadi E. Micronucleus assay-based evaluation of radiosensitivity of lymphocytes among inhabitants living in high background radiation area of Mamuju, West Sulawesi, Indonesia. *Genome Integr* 2018;9:XX-XX.

Access this article online	
Quick Response Code:	Website: www.genome-integrity.org
	DOI: 10.4103/genint.genint_2_18

### Address for correspondence:

Dr. Mukh Syaifudin,  
Nuclear Medicine Technique and Radiation Biology Division,  
Center for Technology of Radiation Safety and Metrology (PTKMR),  
National Nuclear Energy Agency (BATAN),  
Cilandak, Jakarta, Indonesia.  
E-mail: mukh\_syaifudin@batan.go.id

1 damage caused by ionizing radiation. These assays are useful  
2 in determining the adverse effects caused by radionuclides in  
3 the environment. A method which has high sensitivity to be  
4 used for biomonitoring in elevated natural radiation area is  
5 cytokinesis-block micronucleus (CBMN) that frequently used for  
6 evaluating genotoxic effects and chromosome instability in human  
7 peripheral blood lymphocytes.<sup>[3]</sup> It is one of the most reliable  
8 biomarker and established assays for biological dosimetry.<sup>[4]</sup>

9 MNs are masses of DNA that resemble small nuclei located  
10 in the cytoplasm of cells, rather than being within the nuclear  
11 membrane.<sup>[5]</sup> The MNs are simple structure independently and  
12 easy to identify. MN is formed during cell division that has been  
13 subject to exposure to many mutagens, including radiation,  
14 resulting in chromosome breaks or spindle dysfunction and a  
15 binucleated appearance in cells that have undergone cellular  
16 division. MN can be detected using light microscopy, with the  
17 number of cells containing MN within a cell population being  
18 related to the extent of cytogenetic damage.<sup>[6,7]</sup> The MN assay has  
19 been used in a wide range of studies, both in the laboratory and  
20 the field to assess the cytogenetic impact of exposure of different  
21 organisms to pollutants<sup>[8]</sup> and data can be generated in a short  
22 period.<sup>[9]</sup> Beside that information on the cell death by apoptotic  
23 and necrosis, and other cytogenetic damage biomarkers such as  
24 nucleoplasmic bridges and nuclear buds can be simultaneously  
25 obtained from the same slides.

26 The annual effective radiation dose from natural and man-made  
27 sources for the world's population is about 3 mSv, where nearly  
28 80% of this dose comes from natural background radiation,  
29 although levels of natural radiation can vary greatly, even within  
30 countries as well.<sup>[10,11]</sup> The primary radioactive elements in the  
31 earth's crust that lead to human exposure are potassium, uranium,  
32 thorium, and their radioactive decay products (e.g., radium, radon,  
33 etc.). Mamuju has been reported for its high radiation dose rate  
34 due to these element contents in the soil of that area. On gamma  
35 dose rate map of Indonesia, this suburb area of West Sulawesi  
36 shows the highest average dose rate compared to other region in  
37 Sulawesi Island and even Indonesia, which can be at 2800 nSv/h.<sup>[12]</sup>  
38 Although extensive knowledge of radiation risks has been acquired  
39 in previous studies, the health effects of chronic low-level radiation  
40 exposure in that area are still poorly understood.

41 Preliminary studies by Nurhayati *et al.*<sup>[13]</sup> and Syaifudin *et al.*<sup>[14]</sup> on  
42 the cytogenetic effects revealed that MN number in lymphocyte  
43 of HBRA was higher compared to that of normal background  
44 radiation area (NBRA) with no significant difference was found  
45 between groups. The present study evaluated the radiosensitivity  
46 of lymphocytes of local residents exposed chronically to  
47 low-dose radiation exposure in HBRA of Mamuju, which has  
48 an annual effective dose ( $H_p$ ) of  $6.15 \pm 0.81$  mSv<sup>[15]</sup>, after being  
49 irradiated with a challenge dose.

## 50 Materials and Methods

### 52 Blood sampling and ethical approval

53 Twelve healthy adult participants (6 males and 6 females) from  
54 Botteng Village as HBRA at Mamuju District of West Sulawesi

Province and 10 (4 males and 6 females) from normal background  
radiation area (NBRA) of Keang Village of the same district as  
NBRA were included in this study. Peripheral blood samples were  
collected by venipuncture using heparinized vacutainer tubes (BD  
Vacutainer systems). The study was approved by the Ethics  
Committee of the National Institute of Health Research and  
Development, Indonesian Ministry of Health, with the number  
of LB.02.01/5.2.KE.051/2015, January 29, 2015. Informed  
consent was obtained from all donors. A detailed questionnaire  
was provided to obtain information on age and occupation and  
other biodata. All procedures performed in this study were in  
accordance with the ethical standards of the national research  
committee and with the 1964 Helsinki declaration and its later  
amendments or comparable ethical standards.

### Irradiation of the blood as challenge dose

The blood samples were irradiated at dose of 1.5 Gy with  
gamma rays from the <sup>60</sup>Co source at a dose rate of 0.38 Gy/min.  
Irradiation process was performed in the Secondary Standard  
Dosimetry Laboratory at Center for Technology of Radiation  
Safety and Metrology, National Nuclear Energy Agency of  
Indonesia (BATAN) located in Jakarta. The sample was placed  
inside the acrylic box with dimension of 30 cm × 30 cm × 30 cm  
containing water with maintained temperature of 37°C during  
irradiation.

### Micronucleus assay and Nuclear Division Index

Peripheral blood samples were cultured according to the MN  
assay protocol in IAEA publication.<sup>[16]</sup> Two cultures were  
setup in 15 mL centrifuge tube for each blood sample. Whole  
blood samples were cultured for 72 h in the incubator at 37°C  
containing 5% CO<sub>2</sub>. The culture medium consisted of 4.5 mL of  
Rosewell Park Memorial Institute 1640 supplemented with 20%  
heat-inactivated fetal bovine serum, 1% streptomycin-penicillin,  
and 0.1 mL of phytohemagglutinin (PHA). At 44 h, post-PHA  
stimulation, cytochalasin B (an inhibitor of the spindle assembly)  
at a final concentration of 6 µg/ml was added to all the culture  
tubes. The cells were then centrifuged for 10 min at 1000 rpm and  
re-suspended in 7 ml of 0.075 M cold (4°C) KCl. The cells then  
were centrifuged again for 8 min at 1000 rpm and re-suspended  
in freshly made fixative consisting of methanol: acetic acid (10:1)  
diluted 1:1 with Ringer's solution. The cells then were washed  
with two to three further changes of freshly prepared fixative  
until the cell suspension is clear. The cell suspension then was  
stored in -20°C at least for one night until the slide preparation  
was conducted. Fixed cells were dropped onto clean, wet slides,  
dried, and stained with 4% Giemsa solution (pH 6.8). The  
scoring criteria were based on the methods described by IAEA<sup>[16]</sup>,  
Fenech,<sup>[9]</sup> and Vral *et al.*<sup>[17]</sup> and have been implemented in our  
previous studies.<sup>[18-20]</sup> Two thousand binucleated lymphocytes  
were scored at the magnification of 1000 times under microscope  
observation and immersion oil.

For Nuclear Division Index (NDI), each slide in each sample,  
the proportion of mononucleated, binucleated, trinucleated,  
and tetranucleated cells per 500 cells scored was assessed. NDI  
was calculated based on the following formula where M1, M2,

M3, and M4 indicate the number of cells with one, two, three, and four nuclei and N is the total number of cells analyzed.<sup>[9,16]</sup>

$$NDI = \frac{(M1 + 2M2 + 3M3 + 4M4)}{N}$$

### Statistical analysis

Using SPSS 22.0 (IBM United States Software Announcement 213-309) statistical software, unpaired *t*-test was used to compare the MN number between HBRA and control groups before and after irradiation if the data have a normal distribution. The Kolmogorov–Smirnov test was applied to determine the distribution of data.

## Results

This small-scale and simple evaluation was conducted to evaluate the frequency of genotoxic effects of natural radiation in HBRA of Mamuju by focusing on the MN induction within very limited number of subjects. MN can be produced by chromosome breaks and failure in DNA repair machinery is summarized in Table 1. As shown in the Table 1, MN number and its frequency in HBRA group after challenged with gamma ray at dose of 1.5 Gy were lower than that of NBRA (240.92 vs. 377.60 and 0.121 vs. 0.189), indicating an adaptive response of lymphocyte cells that lead to less radiosensitive cells in HBRA group.<sup>[21]</sup> However, there was no statistically difference ( $P > 0.05$ ) between these two groups as measured in independent sample *t*-test. From these, chronic low-dose radiation in Botteng, Mamuju did not have a significant effect on MN frequency among respondents.

The mean background MN in this evaluation was 46.54 from 26,175 binucleated cells and 42.40 from 22,312 cells in HBRA and NBRA, respectively. There is slightly higher MN was found in study area. For nonirradiated samples, it is comparable with previous research,<sup>[13,14]</sup> where the mean MN number were  $44.25 \pm 13.78$  from totally 154,443 BNC that were scored in 70 individuals from HBRA. It means that 1.5 Gy irradiation as challenge dose caused the increase of MN frequency up to around 6 times (0.121 vs. 0.020). In control group of that previous study, a total 39,866 BNC were scored in 18 individuals from NBRA, with the mean MN numbers per binucleated cells were  $37.94 \pm 10.59$ , so that 1.5 Gy irradiation increased up to 11 times higher frequency of MN (0.189 vs. 0.017). Again this means that high natural radiation in Botteng village might have a role in the lesser radiosensitivity of the blood lymphocyte of residents.

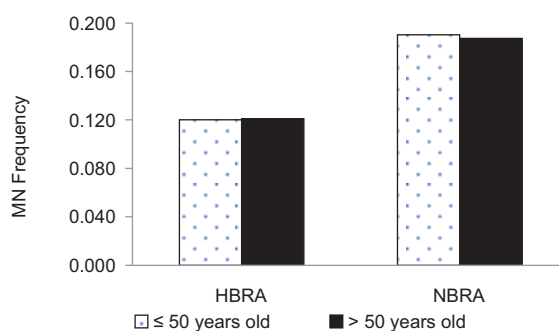
Age and gender may be important demographic variables in

determining the MN frequency. With the assumption that younger individuals may be more susceptible to the effects of environmental radiation, we divided the samples into two groups, <50 years old (8 samples for HBRA and 5 for NBRA), and >50 years old (6 samples for HBRA and 5 for NBRA). The MN frequency between younger and older individuals is not significantly ( $P > 0.05$ ) different [Figure 1].

Ramachandran *et al.*<sup>[22]</sup> observed significantly lower frequency of MN in elder (>40 years) individuals from high-dose group of HBRA as compared to the young ( $\leq 40$  years) individuals after 1.0 Gy ( $P < 0.001$ ) and 2.0 Gy ( $P = 0.002$ ) of challenging doses. However, the basal frequency of MN was also comparable across NBRA and HBRA group ( $P = 0.64$ ). An example of MN in a cytoplasm containing binucleated cells as shown in Figure 2.

When the results were grouped according to the gender, the MN number was found to be higher in women compared to men for both HBRA (0.15 vs. 0.09) and NBRA (0.216 vs. 0.147) groups [Figure 3]. This is comparable to previous study<sup>[13]</sup> where the mean MN numbers per BNC cells in females was higher compared to males in both groups. This is also observed by Alsbeih *et al.*<sup>[23]</sup> that revealed that females and males differed significantly in radiosensitivity ( $P = 0.004$ ) that impacted genetic or single nucleotide polymorphisms association where only XRCC1 gene remained significant in both genders ( $P < 0.05$ ).

Beside the frequency of MN according to age and sex/gender groups described above, the influence of natural radiation exposure to the nuclear division was also studied. Here, the NDI was calculated with published formula [Table 1], and there was no statistically different ( $P > 0.05$ ) found in NDI, as calculated in



**Figure 1:** Frequency of Micronucleus for high background radiation area and normal background radiation area according to the age group of respondents

**Table 1: The mean micronuclei numbers and nuclear division index of high background radiation area as study group and normal background radiation area as control samples (female; male) after being irradiated with gamma rays at 1.5 Gy**

Group	Number of sample (sex)	Mean age±SD (range, years)	Background number of MN±SD (frequency)	Mean MN±SD after irradiation (frequency)	Mean NDI±SD
HBRA	12 (6 female, 6 male)	43.50±15.38 (27-70)	46.54±14.71 (0.0212)	240.92±83.95 (0.121)	1.240±0.11
NBRA (control)	10 (6 female, 4 male)	48.50±14.49 (17-70)	42.40±10.82 (0.0190)	377.60±99.50 (0.189)	1.206±0.09

NDI: Nuclear division index, HBRA: High background radiation area, NBR-A: Normal background radiation area, MN: Micronuclei, SD: Standard deviation

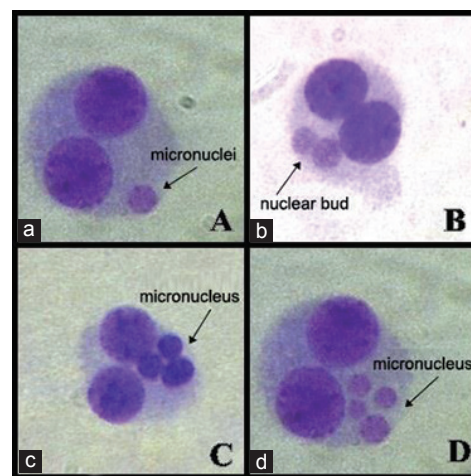
500 metaphase cells, between HBRA and NBRA samples (1.24 vs. 1.21). It is suggested that natural radiation did not significantly affect the nuclear division of lymphocytes. Examples of mononucleated, binucleated, trinucleated, and tetranucleated cells with clear cytoplasm under microscope are shown in Figure 4.

## Discussion

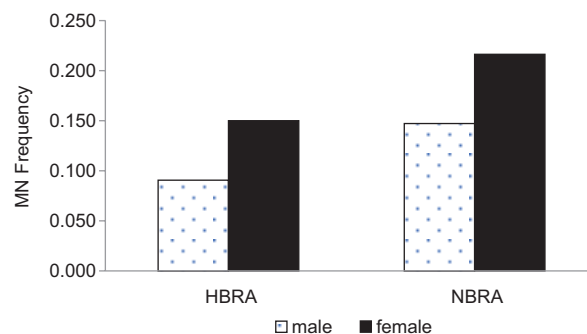
Humans are exposed to ionizing radiation from many sources, including naturally occurring radionuclides, such as cosmic and terrestrial, for example, radon gas.<sup>[24]</sup> Radioactivity is a part of our earth where naturally occurring radioactive materials are present in every things in our life. Background levels of radiation can vary greatly from one location to the next. The average global exposure to natural radiation is 2.4 mSv/year. Doses over 100 mSv can have a harmful effect on humans such as a higher incidence of developing cancer.<sup>[25]</sup> Integrated molecular analysis conducted by Olipitz *et al.*<sup>[26]</sup> indicates undetectable change in DNA damage in mouse after continuous irradiation with dose at about 400-fold natural background radiation.

Ionizing radiation induces gene mutations and cellular death in the target cells. Efforts have been made in the development of techniques for measuring radiation damage in biological systems. Among these techniques, MN test has shown as a good biomarker of DNA damage, being widely used in environmental monitoring to detect genotoxic agents<sup>[27]</sup> and also very useful in monitoring a large number of population<sup>[28]</sup> because of its simplified technique. MN frequencies in human T lymphocytes represent accumulated genetic changes resulting from the spontaneous or induced chromosome breakage/loss induced by physical and chemical agents. Its size in human lymphocytes varies according to inducing agent,<sup>[29]</sup> and the frequency of MN is in a radiation dose-dependent. Besides its reliability and good reproducibility, CBMN assay has become one of the standard cytogenetic tests for genetic toxicology tests in human and mammalian cells.<sup>[9]</sup> The collaborative study group for the MN test based on strain and sex differences, as well as single versus multiple dosing, including mouse peripheral blood erythrocytes stained by acridine orange have been done.<sup>[6]</sup> Using this technique, differentiation can be done between the MN induced by spindle-damaging agents such as vincristine and colcemid, and those caused by agents that directly damaging the chromosomes such as mitomycin-C and X-rays. This may be because the spindle-damaging agents preferentially produces chromatid fragments while mitomycin-C and X-rays produce chromosome fragments.<sup>[29]</sup>

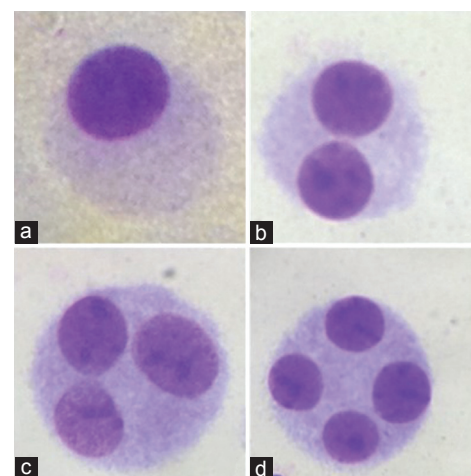
Karuppasamy *et al.*<sup>[30]</sup> found that the overall frequency of MN was 11.7 per 1000 BN cells. The frequencies of MN in the HBRA was 11.7 and NBRA was 11.6 and were not statistically significantly different ( $P = 0.59$ ). However, a statistically significant ( $P < 0.001$ ) age-dependent increase in MN frequency was observed among individuals from both HBRA and NBRA. Whereas Ramachandran *et al.*<sup>[31]</sup> studied in a total of 1,267,788 metaphases from 27,295 newborns of mothers aged 17–45 years were analyzed during 1986–2007. Frequencies of dicentrics in high and normal level radiation areas were  $1.90 \pm 0.14$  and  $2.01 \pm 0.26$  per 10,000 cells, respectively. Frequencies of other biomarkers such as chromosomal



**Figure 2:** Microscopic view of binucleated cells with 1 MN (a), 2 MNs (b), 3 MNs (c) and 4 MNs (d) (arrows) at  $\times 1000$ . MN: Micronucleus



**Figure 3:** Frequency of micronucleus of male and female respondents from both high background radiation area and normal background radiation area



**Figure 4:** Microscopic view of lymphocyte with one/mononucleate (a), two/binucleate (b), three/trinucleate (c), and four/tetranucleate (d), cells.

aberration and karyotype anomalies between the newborns from the HBRA and NBRA were very similar.

In this study, nuclear abnormalities in peripheral blood of individuals living in Mamuju was only focused on MN, whereas

other forms of nuclear abnormalities such as nuclear bud or blebbed cells and binucleated cells with nucleoplasmic bridges were not considered.<sup>[9]</sup> The results obtained here are from a limited number of cases, and some major confounding factors were not controlled for. It should be noted that above and beyond the unavoidable difficulties associated with study of exposure to HBRA, the estimation of cancer risk will be extremely difficult to accomplish with high precision. Understanding the health impacts of low-level chronic public exposure is also critical to provide a rational basis for regulating radiation exposure in today's society.

Overall, the present study concludes that the MN frequency in lymphocytes of HBRA was lower than that of NBRA where this biomarker was affected by age and sex. Further investigations into different types of DNA damage biomarkers are warranted to fully elucidate the role of environmental radioactivity to the health status of inhabitants living in Mamuju.

### Financial support and sponsorship

Nil.

### Conflicts of interest

There are no conflicts of interest.

## References

1. Sinitsky MY, Druzhinin VG. The application of the cytokinesis-block micronucleus assay on peripheral blood lymphocytes for the assessment of genome damage in long-term residents of areas with high radon concentration. *J Radiat Res* 2014;55:61-6.
2. Watanabe Y, Kubota Y, Fuma S, Kouichi M, Ichikawa S, Kubota M, *et al.* Cytokinesis block micronucleus assay in field plants for monitoring radiation-induced genotoxicity of the environment. *Mutat Res Genet Toxicol Environ Mutagen* 2014;774:41-6.
3. Huang Y, Fenech M, Shi Q. Micronucleus formation detected by live-cell imaging. *Mutagenesis* 2011;26:133-8.
4. Wojcik A, Kowalska M, Bouzyk E, Buraczewska I, Kobialko G, Jarociewicz N, *et al.* Validation of the micronucleus-centromere assay for biological dosimetry. *Genet Mol Biol* 2000;23:1083-5.
5. Hebert PD, Luiker MM. Genetic effects of contaminant exposure – towards an assessment of impacts on animal populations. *Sci Total Environ* 1996;191:23-58.
6. Hayashi M. The micronucleus test-most widely used *in vivo* genotoxicity test. *Genes Environ* 2016;38:18.
7. Villela IV, de Oliveira IM, da Silva J, Henriques JA. DNA damage and repair in haemolymph cells of golden mussel (*Limnoperna fortunei*) exposed to environmental contaminants. *Mutat Res* 2006;605:78-86.
8. Syaiful H, Umar R, Hazmin SN, Kamarudin MK, Hassan A, Juahir H. Non-ionizing radiation as threat in daily life. *J Fundament Appl Sci* 2017;9 2 Suppl: 308-16.
9. Fenech M. Cytokinesis-block micronucleus cytome assay. *Nat Protoc* 2007;2:1084-104.
10. Knudsen LE, Hansen AM. Biomarkers of intermediate endpoints in environmental and occupational health. *Int J Hyg Environ Health* 2007;210:461-70.
11. Tzortzis M, Svoukis E, Tsertos H. A comprehensive study of natural gamma radioactivity levels and associated dose rates from surface soils in cyprus. *Radiat Prot Dosimetry* 2004;109:217-24.
12. Syaiful H, Sukadana IG, Sumaryanto A. Radiometric mapping for naturally occurring radioactive materials (NORM) assessment in Mamuju, West Sulawesi. *Atom Indonesia* 2014;40:33-9.
13. Nurhayati M, Purnami S, Syaifudin M. Cytogenetic Evaluation in Peripheral Blood Lymphocytes of Individuals Living in High Natural Background Radiation of Botteng Village, Mamuju. *Proceedings 2<sup>nd</sup> International Conference on the Sources, Effects and Risks of Ionizing Radiation (SERIR2)*. Bali; September 5, 2016. p. 80-4.
14. Syaifudin M, Purnami S, Rahardjo T, Kurnia I, Rahajeng N, Darlina *et al.* Cytogenetic and molecular damages in blood lymphocyte of inhabitants living in high level natural radiation area (HLNRA) of Botteng Village, Mamuju, West Sulawesi. *Radiat Environ Med* [In Press].
15. Alatas Z, Lusiyanti Y, Purnami S, Ramadhani D, Lubis M, Viria AS. Cytogenetics response of community living in high natural radiation in Mamuju Regency, West Sulawesi. *Journal of Indonesian Nuclear Science and Technology* 2012;13:13-26.
16. International Atomic Energy Agency. Biological Dosimetry Chromosomal Aberration Analysis For Dose Assessments. Technical Reports Series No. 260. Vienna, Austria: IAEA; 2001. p. 25-31.
17. Vral A, Fenech M, Thierens H. The micronucleus assay as a biological dosimeter of *in vivo* ionising radiation exposure. *Mutagenesis* 2011;7:11-7.
18. Syaifudin M, Lusiyanti Y, Purnami S, Lee YS, Kang CM. Assessment of ionizing radiation induced dicentric chromosome and micronuclei in human peripheral blood lymphocytes for preliminary reconstruction of cytogenetic biodosimetry. *Atom Indonesia* 2017;43:47-54.
19. Lusiyanti Y, Alatas Z, Syaifudin M. Lack of radioprotective potential of ginseng in suppressing micronuclei frequency in human blood lymphocyte under gamma irradiation. *Hayati J Biosci* 2015;22:93-7.
20. Lusiyanti Y, Alatas Z, Syaifudin M, Purnami S. Establishment of a dose-response curve for X-ray-induced micronuclei in human lymphocytes. *Genome Integr* 2016;7:7.
21. Defiyandra VP. Study on the Adaptive Response of Micronuclei in Lymphocyte Cells of Residents Living in High Natural Radiation Area of Mamuju District, West Sulawesi. B.Sc. Thesis of Indonesia Al-azhar University. Jakarta; 2017.
22. Ramachandran EN, Karuppusamy CV, Kumar VA, Soren DC, Kumar PR, Koya PK, *et al.* Radio-adaptive response in peripheral blood lymphocytes of individuals residing in high-level natural radiation areas of Kerala in the Southwest Coast of India. *Mutagenesis* 2017;32:267-73.
23. Alsbeih G, Al-Meer RS, Al-Harbi N, Bin Judia S, Al-Buhairi M, Venturina NQ, *et al.* Gender bias in individual radiosensitivity and the association with genetic polymorphic variations. *Radiother Oncol* 2016;119:236-43.
24. Suzuki K, Yamashita S. Low-dose radiation exposure and carcinogenesis. *Jpn J Clin Oncol* 2012;42:563-8.
25. Hendry JH, Simon SL, Wojcik A, Sohrabi M, Burkart W, Cardis E, *et al.* Human exposure to high natural background radiation: What can it teach us about radiation risks? *J Radiol Prot* 2009;29:A29-42.
26. Olipitz W, Wiktor-Brown D, Shuga J, Pang B, McFaline J, Lonkar P, *et al.* Integrated molecular analysis indicates undetectable change in DNA damage in mice after continuous irradiation at ~ 400-fold natural background radiation. *Environ Health Perspect* 2012;120:1130-6.
27. Silva LR, Silva EB, da Silva RC, Amâncio FF, Melo MM. Micronuclei as Biomarkers of Genotoxicity of Gamma Radiation in Aquatic Environments. 2011 International Nuclear Atlantic Conference-INAC 2011. Belo Horizonte, MG, Brazil; October 24-28, 2011.
28. An MY, Kim TH. Frequencies of micronuclei in peripheral lymphocytes in Korean populations after chronic low-dose radiation exposure. *J Vet Sci* 2002;3:213-8.
29. Högstedt B, Karlsson A. The size of micronuclei in human lymphocytes varies according to inducing agent used. *Mutat Res* 1985;156:229-32.
30. Karuppusamy CV, Ramachandran EN, Kumar VA, Kumar PR, Koya PK, Jaikrishan G, *et al.* Peripheral blood lymphocyte micronucleus frequencies in men from areas of Kerala, India, with high vs. normal levels of natural background ionizing radiation. *Mutat Res Genet Toxicol Environ Mutagen* 2016;800-801:40-5.
31. Ramachandran EN, Karuppusamy CV, Cheriyan VD, Soren DC, Das B, Anilkumar V, *et al.* Cytogenetic studies on newborns from high and normal level natural radiation areas of Kerala in Southwest Coast of India. *Int J Radiat Biol* 2013;89:259-67.